

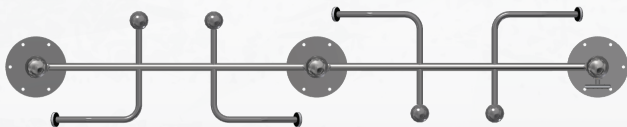
Assembly Instructions

FIT-000003

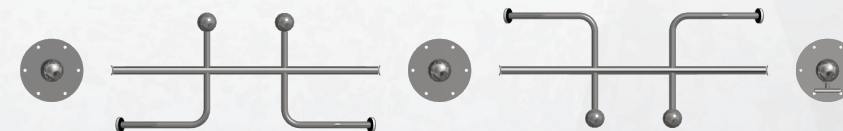
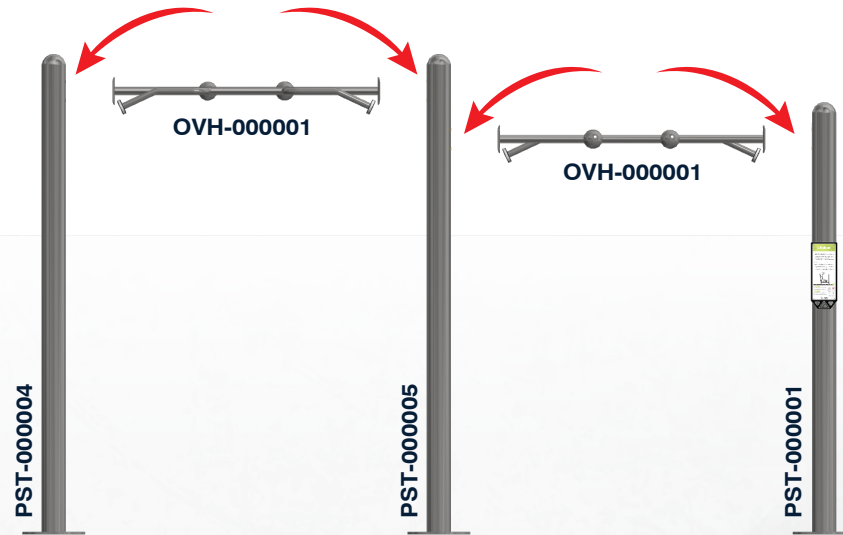
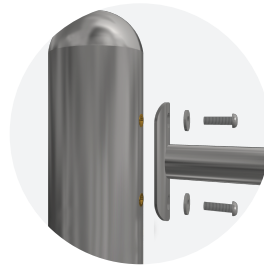
Multi-Grip Pull Up Bars Station 92" & 82"

Surface Mounted

Final Assembly



Assembly Steps



- | | |
|-----------------------------|---|
| KIT QTY
x1 | TOOLS
HARDWARE KIT
KIT-000057 |
| KIT QTY
x2 | ASSEMBLY
HARDWARE KIT
KIT-000050 |
| KIT QTY
x3 | INSTALL
HARDWARE KIT
Surface Mount 13"
KIT-000056 |