

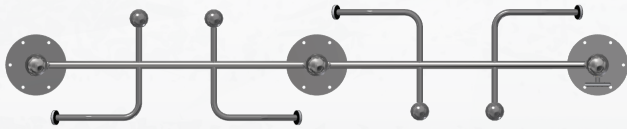
# Assembly Instructions

## FIT-000003

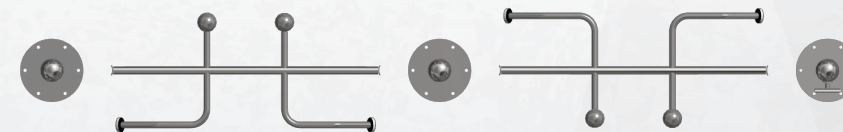
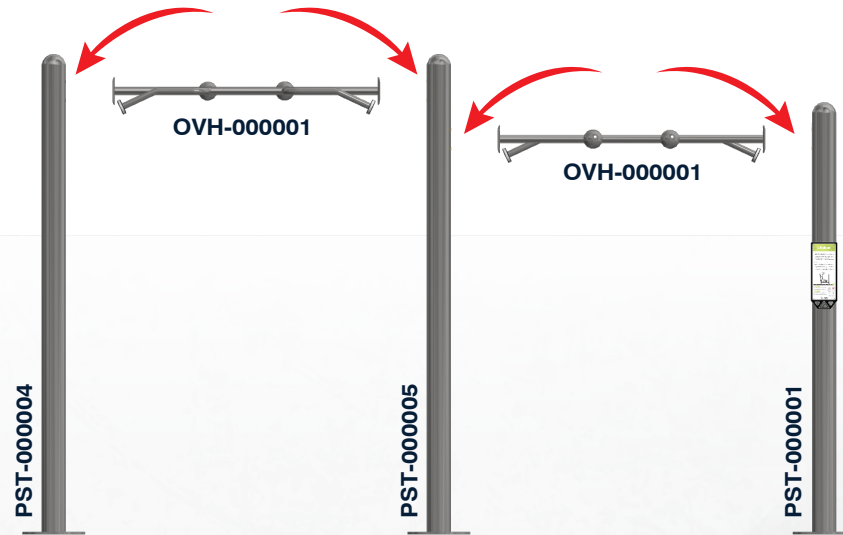
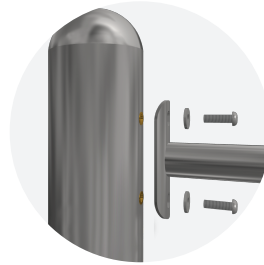
Multi-Grip Pull Up Bars Station 92" & 82"

## Post in Concrete

### Final Assembly



### Assembly Steps



<b>KIT QTY</b> <b>x1</b>	<b>TOOLS</b> <b>HARDWARE KIT</b> <b>KIT-000057</b>
<b>KIT QTY</b> <b>x2</b>	<b>ASSEMBLY</b> <b>HARDWARE KIT</b> <b>KIT-000050</b>
<b>KIT QTY</b> <b>x3</b>	<b>INSTALL</b> <b>HARDWARE KIT</b> <small>Surface Mount 13"</small> <b>KIT-000054</b>